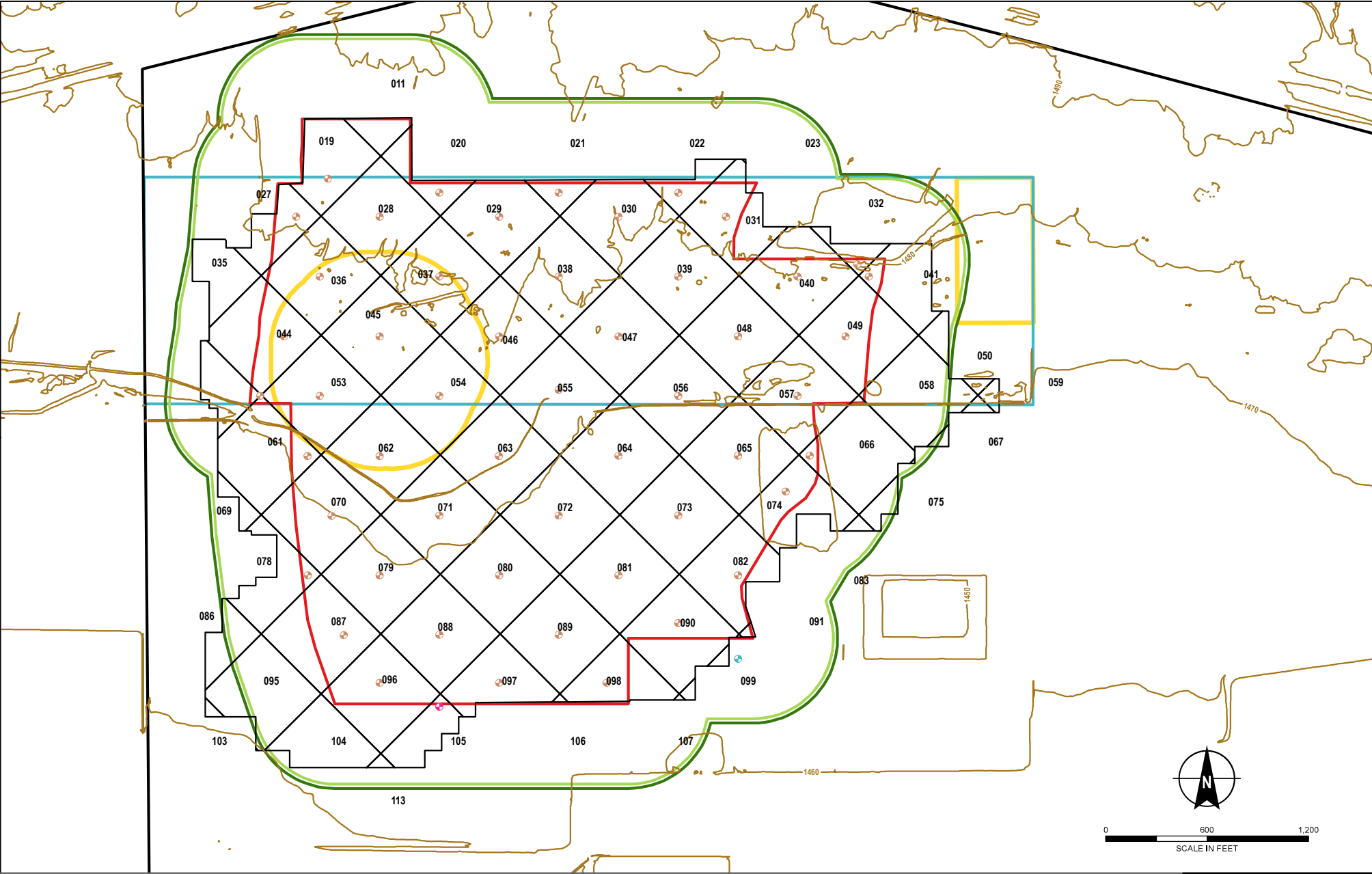


GIS FILE PATH: \\nafeval\hishare\hsh_ common\Projects\Florence Copper\132473 Florence Groundwater Permitting\GIS\Maps\2020_03\132473_005_000A_RESOURCE_BLOCK_LOCATIONS.mxd — USER: knensen — LAST SAVED: 3/9/2022 2:45:01 PM



Resource Block ID	Proposed Verification Wells	Easting	Northing
19	921	847389.33	747205.16
20	606	848048.26	747121.19
21	132	846987.54	745919.05
22	32	849462.37	747121.19
27	882	847199.76	746979.67
28	624	847694.69	746979.70
29	661	848401.76	746979.77
30	71	849108.81	746979.72
31	194	849745.17	746979.79
32	326	850522.94	746697.10
36	734	847341.14	746626.15
37	679	848048.20	746626.21
38	23	848755.27	746626.28
39	167	849462.32	746626.23
40	246	850169.37	746626.29
41	1890	850591.17	746626.45
44	758	847128.98	746272.60
45	557	847694.63	746272.64
46	369	848401.69	746272.70
47	98	849108.75	746272.66
48	223	849815.81	746272.72
49	321	850452.17	746272.79
53	503	847341.06	745919.07
54	461	848048.13	745919.14
55	403	848755.19	745955.32
56	958	849462.25	745919.16
57	821	850169.30	745919.21
61	2224	847269.28	745564.03
62	2119	847693.51	745564.06
63	2152	848400.57	745564.13
64	1661	849108.68	745565.60
65	1587	849815.75	745565.66
66	977	850239.98	745565.69
70	2245	847410.65	745210.51
71	2050	848048.06	745212.07
72	1728	848755.13	745212.14
73	1532	849462.18	745212.10
74	1208	850098.55	745353.56
78	1887	847270.27	744858.48
79	2076	847694.50	744858.51
80	1700	848401.56	744858.58
81	1370	849108.62	744858.53
82	1115	849815.68	744858.60
87	1932	847482.35	744504.96
88	1816	848047.82	744505.19
89	1323	848755.06	744505.07
90	1145	849462.13	744575.74
96	1878	847694.25	744222.33
97	1345	848401.50	744222.21
98	1423	849037.84	744222.16
99	1160	849815.64	744363.65
105	1847	848047.95	744080.76

LEGEND

- PROPOSED INJECTION / RECOVERY WELL
- PROPOSED OBSERVATION WELL
- PROPOSED PERIMETER WELL
- 10 FOOT TOPOGRAPHIC CONTOUR
- RESOURCE BLOCK
- ISCR WELL FIELD
- PROPOSED AOR / FORMER BHP AOR
- AQUIFER EXEMPTION BOUNDARY
- STATE MINERAL LEASE BOUNDARY
- PTF AOR BOUNDARY
- FLORENCE COPPER PROPERTY BOUNDARY

NOTES

1. ALL LOCATIONS AND DIMENSIONS ARE APPROXIMATE
2. TOPOGRAPHY DATA BY FLORENCE COPPER, OCTOBER 2010. 10-FOOT INTERVALS SHOWN.

HALEY
ALDRICH

FLORENCE COPPER, INC.,
FLORENCE, ARIZONA 85132

PROPOSED VERIFICATION WELLS

FLORENCE
COPPER

MARCH 2022